

ELISAONE™ AKT 1/2/3 Assays

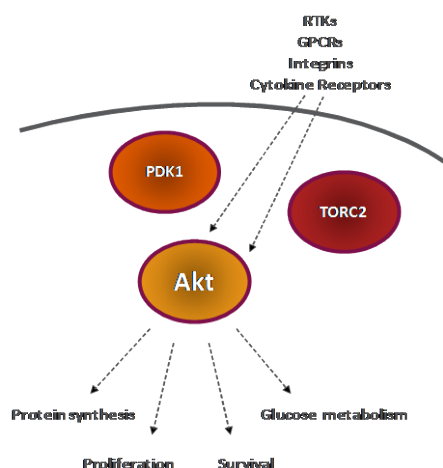
ELISAONE™ assay kits for analysis of cellular AKT 1/2/3 (p-Ser473) phosphorylation and Total AKT1

ELISAONE™ Overview

ELISAONE assay kits are for the detection of cellular proteins. A whole new way of performing cellular assays, ELISAONE takes the hard work out of running a standard ELISA, while still giving the high quality results expected from a sandwich immunoassay. Fully self-contained kits are supplied in a convenient 96-well format. Simple to use and highly sensitive, ELISAONE kits are designed to get results, fast.

ELISAONE™ phospho-AKT and Total AKT assays

AKT isoforms belong to a conserved family of serine/threonine protein kinases. AKT plays a central role in cell survival and inhibiting apoptosis, by phosphorylating and inactivating several targets. AKT is activated by insulin and various other agonists, which promote transport to the plasma membrane, where the activation loop of AKT is phosphorylated at Thr308 by PDK1. The carboxy terminus is phosphorylated at Ser473 by mammalian target of rapamycin complex 2 (TORC2).



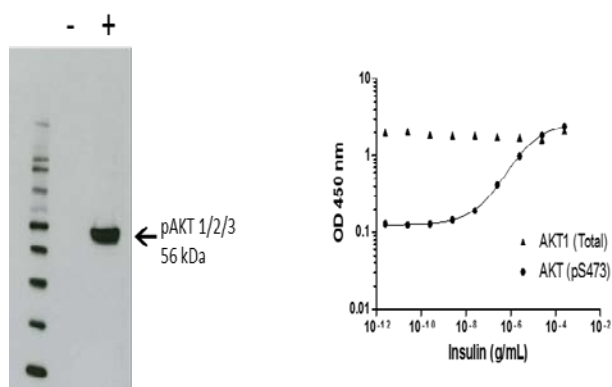
AKT substrates include Bad, forkhead transcription factors, and caspase-9. Another vital AKT function is the regulation of glycogen synthesis through phosphorylation of GSK-3. AKT phosphorylation also prevents GSK-3 β mediated phosphorylation and degradation of cyclin D1, and negatively regulates the cyclin dependent kinase inhibitors p27 Kip and p21 Waf1/CIP1. AKT also plays a critical role in the regulation of TORC1 and tuberlin (TSC2).

ELISAONE™ AKT assay technical specifications

Specificity:

TGR's ELISAONE AKT 1/2/3 assay kits detect endogenous levels of AKT 1/2/3 (GenBank Accessions NP_001014431 [AKT1], NP_001617 [AKT2], and NP_859029 [AKT3]) in cellular lysates. Phospho-AKT 1/2/3 assay kits only detect AKT when phosphorylated at Ser473. Total AKT 1/2/3 assay kits detect AKT 1/2/3 irrespective of phosphorylation status.

As shown below, using the AKT 1/2/3 assay kits or Western blot, a significant increase in AKT 1/2/3 phosphorylation at Ser473 is detected in MCF7 cells treated with insulin for 15 minutes (+), compared with untreated cells (-), whereas no change in total AKT 1/2/3 levels was observed.



Species cross-reactivity:

Tested: Human, mouse, hamster

Expected: Rat

Other species should be tested on a case-by-case basis.

QC:

Phospho-AKT and Total-AKT assays are routinely tested against HEK293 cellular lysates. See certificate of analysis for Lot-specific information. Available at www.tgrbio.com.

Ordering Information

ELISAONE Assay Kits are available now from:

CEDARLANE (www.cedarlanelabs.com)

US: 1-800-721-1644

CANADA: 1-800-268-5058

AXXORA (www.axxora.com)

US: 1-858-550-8830

Email: axxora-usa@axxora.com

Product	Pack Size	Catalog
Phospho-AKT1/2/3 (S473)	96 assays	EOK002
Total AKT1	96 assays	EOK053

Complementary Products

ELISAONE™ assay kits are available for the following targets:

MAPK Signaling:

ERK 1/2, p38 MAPK, JNK/SAPK

AKT Signaling:

AKT 1/2/3, p70S6K

STAT Signaling:

STAT3, STAT5

NF-κB Signaling:

NF-κB p65, I-κBα

p53 Signaling:

p53 (p-Ser15)

Protein normalization:

GAPDH

Also available separately:

Product	Pack Size	Catalog
ELISAONE™ 96-well strip-well microplates	1 plate	EPL001
	5 plates	EPL002
5X Lysis Buffer	100mL	EBF001
Enhancer Solution	100mL	EBF002
10X Wash Buffer	500mL	EBF003