

ELISAONE™ SMAD1 Assays

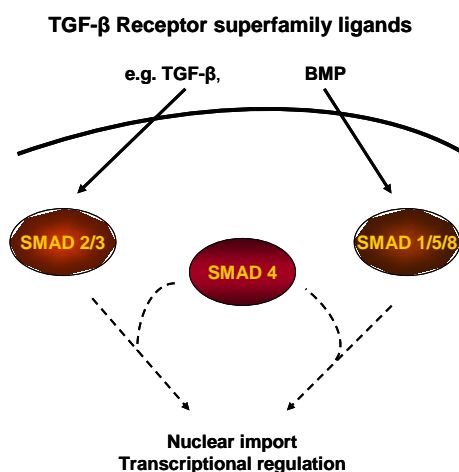
ELISAONE™ assay kits for analysis of cellular SMAD1 (p-Ser463/465) phosphorylation and Total SMAD1

ELISAONE™ Overview

ELISAONE assay kits are for the detection of cellular proteins. A whole new way of performing cellular assays, ELISAONE takes the hard work out of running a standard ELISA, while still giving the high quality results expected from a sandwich immunoassay. Fully self-contained kits are supplied in a convenient 96-well format. Simple to use and highly sensitive, ELISAONE kits are designed to get results, fast.

ELISAONE™ phospho-SMAD1 and Total SMAD1 assays

Bone morphogenetic protein (BMPs) receptors belong to the TGFβ-receptor superfamily, and bind BMPs to regulate a range of cellular processes, via the SMAD signaling pathway. BMP binding to the receptors induces multimerization and activation of the receptors, which can then phosphorylate SMAD1 at Ser463 and Ser465, and SMAD5 and SMAD8 at corresponding C-terminal sites.

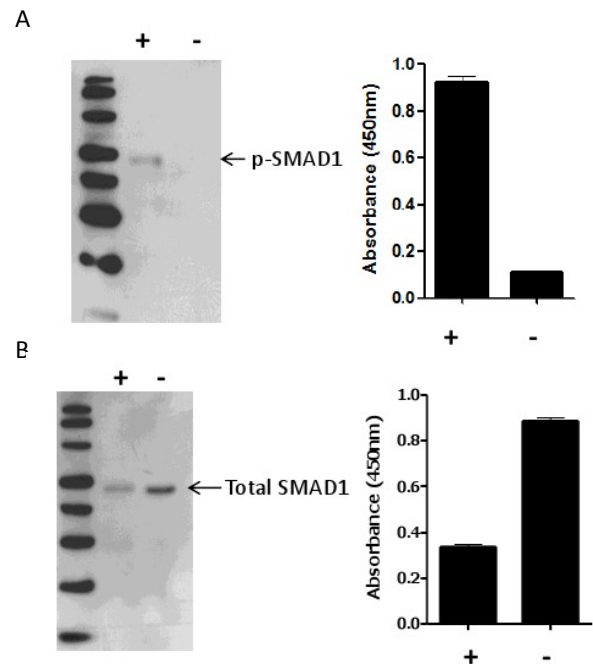


Activated SMADs dimerize with SMAD4, translocate to the nucleus, and stimulate transcription of particular genes. BMP-mediated signaling regulates several cellular processes including proliferation, differentiation and apoptosis.

ELISAONE™ SMAD1 (p-Ser463/465) assay technical specifications

Specificity:

TGR's ELISAONE SMAD1 (p-Ser463/465) assay kits detect endogenous levels of SMAD1 (GenBank Accession NP_001003688) in cellular lysates. Phospho-SMAD1 assay kits only detect SMAD1 when phosphorylated at Ser463/465 (A). Total SMAD1 assay kits detect SMAD1 irrespective of phosphorylation status (B). Based on sequence similarity, cross reaction to SMAD5 and SMAD8 may occur.



Species cross-reactivity:

Tested: Human, mouse

Expected: Rat

Other species should be tested on a case-by-case basis.

QC:

Phospho-SMAD1 and Total-SMAD1 assays are routinely tested against C2C12 cellular lysates. See certificate of analysis for Lot-specific information. Available at www.tgrbio.com.

Ordering Information

ELISAONE Assay Kits are available now from:

CEDARLANE (www.cedarlanelabs.com)

US: 1-800-721-1644

CANADA: 1-800-268-5058

AXXORA (www.axxora.com)

US: 1-858-550-8830

Email : axxora-usa@axxora.com

| Product | Pack Size | Catalog |
|---------------------------|-----------|---------|
| Phospho-Smad 1 (S463/465) | 96 assays | EOK027 |
| Total Smad 1 | 96 assays | EOK037 |

Complementary Products

ELISAONE™ assay kits are available for the following targets:

MAPK Signaling:

ERK 1/2, p38 MAPK, JNK/SAPK, c-JUN

AKT Signaling:

AKT 1/2/3, p70S6K, RPS6, BAD

STAT Signaling:

STAT3, STAT5

NF-κB Signaling:

NF-κB p65, I-κBα, IKKα

Other targets:

p53, CREB1, SMAD1, SMAD3

Wnt Signaling:

β-Catenin, GSK3β

Protein normalization:

GAPDH

Also available separately:

| Product | Pack Size | Catalog |
|--|-----------|---------|
| ELISAONE™ 96-well strip-well microplates | 1 plate | EPL001 |
| | 5 plates | EPL002 |
| 5X Lysis Buffer | 100mL | EBF001 |
| Enhancer Solution | 100mL | EBF002 |
| 10X Wash Buffer | 500mL | EBF003 |

Check our website (www.tgrbio.com) for the latest information on target availability.