

ELISAONE™ p38 MAPK Assays

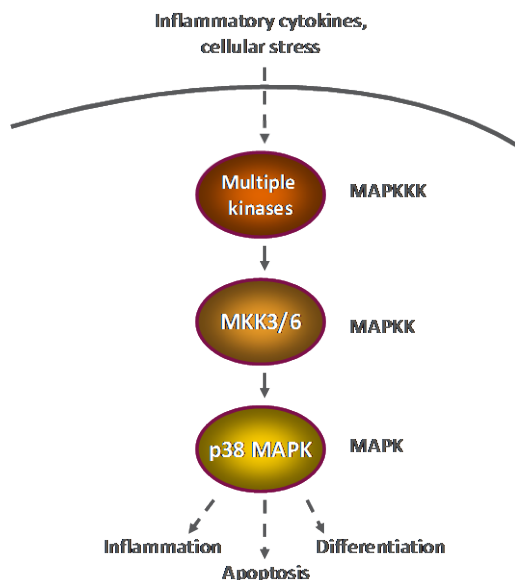
ELISAONE™ assay kits for analysis of cellular p38 MAPK (p-Thr180/Tyr182) phosphorylation and Total p38 MAPK

ELISAONE™ Overview

ELISAONE assay kits are for the detection of cellular proteins. A whole new way of performing cellular assays, ELISAONE takes the hard work out of running a standard ELISA, while still giving the high quality results expected from a sandwich immunoassay. Fully self-contained kits are supplied in a convenient 96-well format. Simple to use and highly sensitive, ELISAONE kits are designed to get results, fast.

ELISAONE™ phospho-p38 MAPK and Total p38 MAPK assays

p38 MAPK is a member of the MAP kinase family, which are involved in a wide variety of cellular processes such as proliferation, differentiation, transcription regulation and development. In particular, p38 MAPK is activated by phosphorylation at Thr180 and Tyr182, which is mediated by a variety of cellular stresses including inflammatory cytokines, UV light, osmotic shock and lipopolysaccharides.



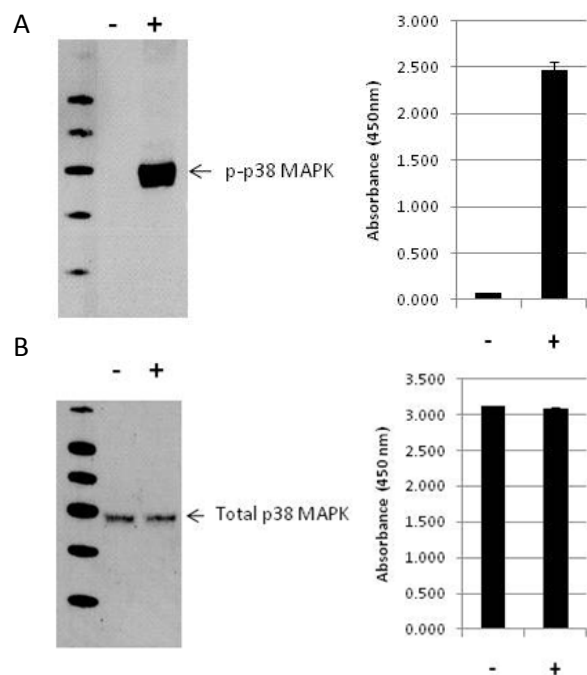
Activated p38 MAP kinase has been shown to phosphorylate and activate several downstream kinases and transcription factors implicated in regulating stress related transcription and the control of cell cycle.

ELISAONE™ p38 MAPK assay technical specifications

Specificity:

TGR's ELISAONE p38 MAPK assay kits detect endogenous levels of p38 MAPK (GenBank Accession NP_001306) in cellular lysates. Phospho-p38 MAPK assay kits detect p38 MAPK only when phosphorylated at Thr180/Tyr182. Total p38 MAPK assay kits detect p38 MAPK irrespective of phosphorylation status.

As shown below, analysis by either Western blot, or ELISAONE p38 MAPK assay kits, revealed a significant stimulation of p38 MAPK phosphorylation at Thr180/Tyr182 is detected in HEK293 cells treated with anisomycin for 30 minutes compared with untreated cells, (B) while no change in total p38 MAPK levels is observed.



Species cross-reactivity:

Tested: Human, mouse; Expected: Rat

Other species should be tested on a case-by-case basis.

QC: Phospho-p38 MAPK and Total p38 MAPK assays are routinely tested against HEK293 cellular lysates. See certificate of analysis for Lot-specific information. Available at www.tgrbio.com.

Ordering Information

ELISAONE Assay Kits are available now from:

CEDARLANE (www.cedarlanelabs.com)

US: 1-800-721-1644

CANADA: 1-800-268-5058

AXXORA (www.axxora.com)

US: 1-858-550-8830

Email: axxora-usa@axxora.com

Product	Pack Size	Catalog
Phospho-p38 MAPK (T180/Y182)	96 assays	EOK008
Total p38 MAPK	96 assays	EOK018

Complementary Products

ELISAONE™ assay kits are available for the following targets:

MAPK Signaling:

ERK 1/2, p38 MAPK, JNK/SAPK

AKT Signaling:

AKT 1/2/3, p70S6K

STAT Signaling:

STAT3, STAT5

NF-κB Signaling:

NF-κB p65, I-κBα

p53 Signaling:

p53

Protein normalization:

GAPDH

Also available separately:

Product	Pack Size	Catalog
ELISAONE™ 96-well strip-well microplates	1 plate	EPL001
	5 plates	EPL002
5X Lysis Buffer	100mL	EBF001
Enhancer Solution	100mL	EBF002
10X Wash Buffer	500mL	EBF003

Check our website (www.tgrbio.com) for the latest information on target availability.