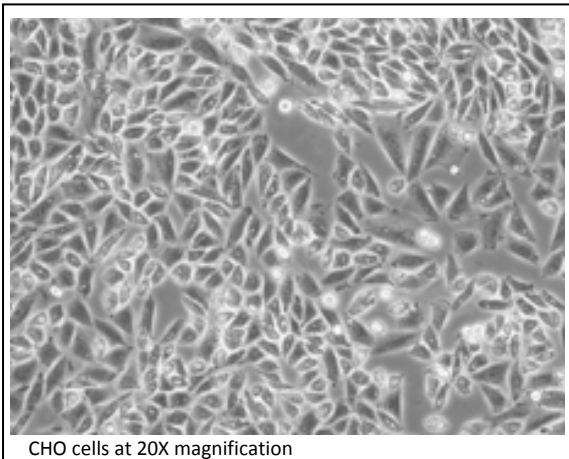


# CHO cells

## Handling suggestions for CHO cells

Chinese hamster ovary (CHO) cells are a cell line derived from the ovary of the Chinese hamster. They are often used in biological and medical research as a cellular background for transfection of receptors and other proteins, and commercially in the production of therapeutic proteins. An adherent cell line, they grow rapidly and are very easy to culture and handle. CHO cells carrying transfected G protein coupled receptors (GPCRs) have been used extensively with a number of functional readouts, including the common GPCR secondary messengers such as cyclic AMP, calcium mobilization, and ERK phosphorylation.



CHO cells at 20X magnification

**Morphology:** epithelial

**Source:** ovary

**Growth:** adherent

**Organism:** Hamster

**Sources:** ECACC Cat# 85050302

**Suggested media:**

Ham's F12 (Gibco Cat#11765) supplemented with 10% FBS (Gibco)

1% Sodium pyruvate (Gibco Cat#11360)

1% Pen Strep (Gibco Cat#15140)

**Culturing suggestions:**

Split 1:5 - 1:10 when 70-90% confluent.

**Detectable signaling pathways:**

MAPK

Akt