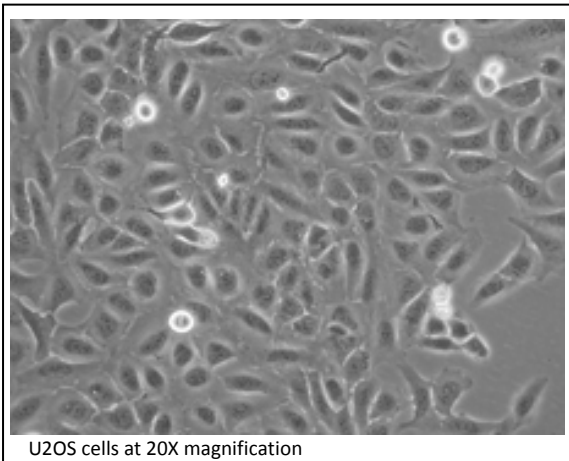


U-2 OS cells

Handling suggestions for U-2 OS cells

U-2 OS is a human osteosarcoma cell line. The U-2 OS cell line was established from the bone tissue of a fifteen-year-old human female suffering from osteosarcoma. Established in 1964, the original cells were taken from a moderately differentiated sarcoma of the tibia. U-2 OS cells are adherent and easy to grow. These cells express readily detectable levels of p53, which can be readily upregulated with DNA damaging chemicals such as doxorubicin or etoposide.



U2OS cells at 20X magnification

Morphology: epithelial

Source: bone

Growth: adherent

Organism: Human

Sources: ATCC Cat# HTB-96
ECACC Cat# 92022711

Suggested media:

McCoy's 5A (Gibco Cat#16600) supplemented with
10% FBS (Gibco)
1% Sodium pyruvate (Gibco Cat#11360)
1% Pen Strep (Gibco Cat#15140)

Culturing suggestions:

Split 1:3 - 1:6 when 80-90% confluent.

Detectable signaling pathways:

p53

Known Receptors:

IGF-R1, IGF-2