

ELISAONE™ I- κ B α Assays

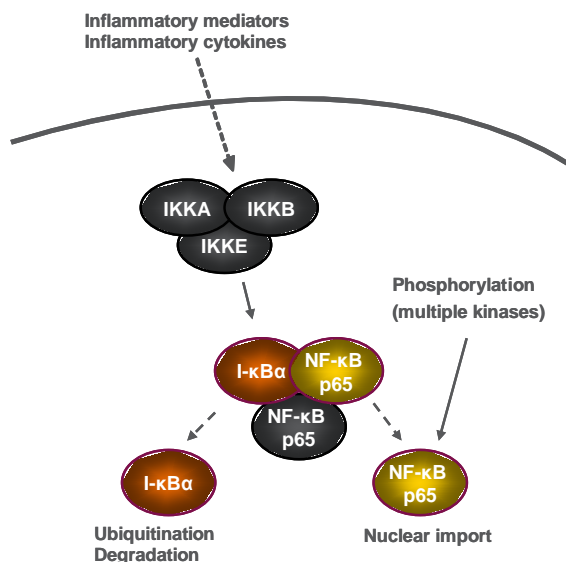
ELISAONE™ assay kits for analysis of cellular I- κ B α (p-Ser32/36) phosphorylation and Total I- κ B α

ELISAONE™ Overview

ELISAONE assay kits are for the detection of cellular proteins. A whole new way of performing cellular assays, ELISAONE takes the hard work out of running a standard ELISA, while still giving the high quality results expected from a sandwich immunoassay. Fully self-contained kits are supplied in a convenient 96-well format. Simple to use and highly sensitive, ELISAONE kits are designed to get results, fast.

ELISAONE™ phospho-I- κ B α and Total I- κ B α assays

I- κ B proteins are present in the cytosol bound to NF- κ B/Rel transcription factors, forming inactive complexes. Activation of NF- κ B/Rel occurs via phosphorylation of I- κ B, which targets I- κ B for proteasome-mediated degradation, releasing NF- κ B/Rel for phosphorylation and nuclear import.



I- κ B α phosphorylation is stimulated by many extracellular signals, such as inflammatory cytokines, growth factors and chemokines. Phosphorylation of I- κ B α at Ser32/36 is essential for the release of active NF- κ B, so phosphorylation at this site is a good marker of NF- κ B activation.

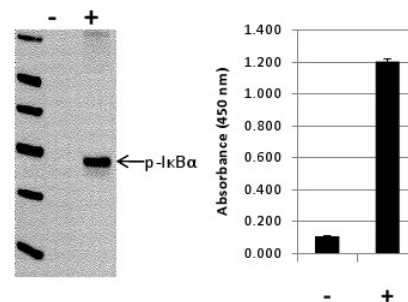
ELISAONE™ I- κ B α assay technical specifications

Specificity: TGR's ELISAONE I- κ B α assay kits detect endogenous levels of I- κ B α (GenBank Accession NP_065390) in cellular lysates. Phospho-I- κ B α assay kits detect I- κ B α only when phosphorylated at Ser32/36. Total I- κ B α assay kits detect I- κ B α irrespective of phosphorylation status.

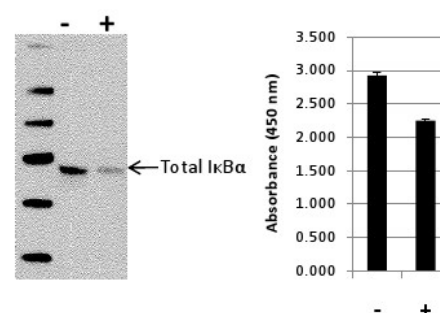
ELISAONE™ I- κ B α assay performance

Analysis using either Western blot or ELISAONE I- κ B α assay kits revealed significant stimulation of I- κ B α phosphorylation at Ser32/36 in HeLa cells treated with TNF α for 5 minutes compared with untreated cells, while little change in total I- κ B α levels is observed over this time period.

Phospho I- κ B α



Total I- κ B α



Species cross-reactivity:

Tested: Human; Expected: Mouse, Rat

Other species should be tested on a case-by-case basis.

QC: Phospho-I- κ B α and Total I- κ B α assays are routinely tested against HeLa cellular lysates. See certificate of analysis for Lot-specific information. Available at www.tgrbio.com.

Ordering Information

ELISAONE Assay Kits are available now from:

Ordering Information

ELISAONE Assay Kits are available now from:

CEDARLANE (www.cedarlanelabs.com)

US: 1-800-721-1644

CANADA: 1-800-268-5058

AXXORA (www.axxora.com)

US: 1-858-550-8830

Email : axxora-usa@axxora.com

Product	Pack Size	Catalog
Phospho-I- κ B α (S32/36)	96 assays	EOK004
Total I- κ B α	96 assays	EOK014

Complementary Products

ELISAONE™ assay kits are available for the following targets:

MAPK Signaling:

ERK 1/2, p38 MAPK, JNK/SAPK, c-JUN

AKT Signaling:

AKT 1/2/3, p70S6K, RPS6, BAD

STAT Signaling:

STAT3, STAT5

NF- κ B Signaling:

NF- κ B p65, I- κ B α , IKK α

Other targets:

p53, CREB1, SMAD1, SMAD3

Wnt Signaling:

β -Catenin, GSK3 β

Protein normalization:

GAPDH

Also available separately:

Product	Pack Size	Catalog
ELISAONE™ 96-well strip-well microplates	1 plate	EPL001
	5 plates	EPL002
5X Lysis Buffer	100mL	EBF001
Enhancer Solution	100mL	EBF002
10X Wash Buffer	500mL	EBF003

Check our website (www.tgrbio.com) for the latest information on target availability.